



RARITAN

The Most Dependable Name on the Water

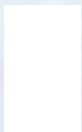
RUDDERMASTER™

Benefits

- Ready for installation with all necessary components needed – meter, calibration box and sending unit
- Constant monitoring of rudder angle position from 0 to 45 degrees
- Great aid for docking or close maneuvering
- Each unit is assembled by hand, individually tested and backed by Raritan's one-year Limited Warranty and legendary technical support team

Options

- Available in five models:
 - MK2 and MK3 models are water resistant and backlit
 - MK5 and MK6 models use easy to read panoramic meters
- MK5 and MK6 models operate on all standard voltages (6, 12, 24 and 32V DC) – Specify voltage when ordering an MK2 or MK3
- Repeater units are available for multiple station readouts
- Any model can be ordered with longer wire



NEW

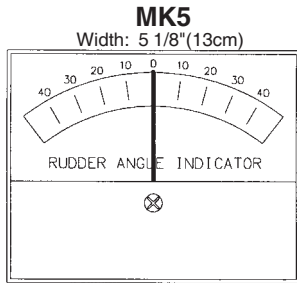
3 3/8" Backlit Meter

Rudder angle indicators are economical steering aids and rudder position monitors.

Raritan products are chosen by powerboat, sailboat, houseboat, and RV owners and manufacturers the world over for their dependability, environmental responsibility, simplicity of installation, operation, and maintenance. The product line includes house-hold style toilets, marine toilets, marine sanitation devices and systems, cleaning products, icemakers, water heaters, and rudder angle indicators.

To view our complete line as well as obtain installation and servicing guides: visit www.raritaneng.com

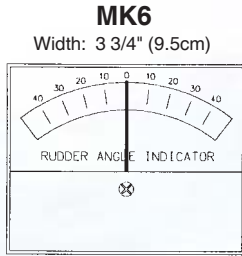
RUDDERMASTER™



Width: 5 1/8" (13cm)

Height:
4"
(10.2cm)

Depth: 1 1/8" (2.9cm)



Width: 3 3/4" (9.5cm)

Height:
2 7/8"
(7.3cm)

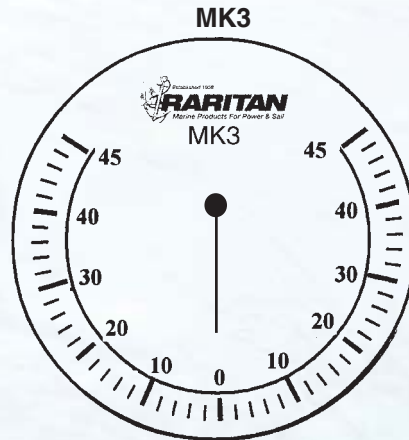
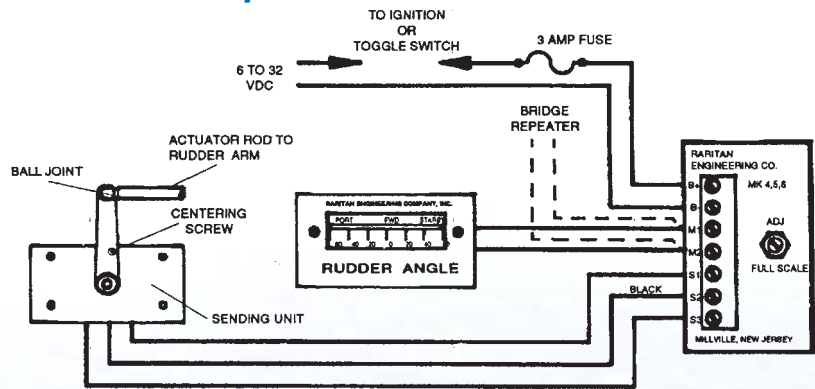
Depth: 1 1/8" (2.9cm)



Diameter:
2" (5.1cm)

Depth: 2 3/8" (6.1cm)

Sample Installation



Depth: 2 1/2"

Diameter:
3 3/8"

Models and Options

Part #	Description
MK2*	2" round Meter
MK3*	3 3/8" round meter
MK5	Panoramic 4 1/2" Flush mount Meter
MK6	Panoramic 3 1/2" Flush mount Meter
MK2R*	Repeater Unit with MK2 Meter
MK5R	Repeater Unit with MK5 Meter
MK6R	Repeater Unit with MK6 Meter

Any model can be special ordered with longer wire by adding length to (suffix) part #. Example: MK5-60

Approximate Shipping Weight: 3 lbs (1.4 kg)

* Specify Voltage

Select an area where the Ruddermaster can be easily viewed by the navigator, but also where the Ruddermaster will not be affected by washdown spray or by direct elements. Ruddermasters are not water resistant. MK2 and MK3 are splash resistant.

For more information contact:

Raritan Engineering Company Inc.
530 Orange Street
Millville, NJ 08332, USA
Telephone: 856-825-4900
Fax: 856-825-4409
e-mail: info@raritaneng.com

Southern Plant and Office
3101 SW 2nd Avenue
Ft. Lauderdale, FL 33315, USA
Telephone: 954-525-0378
Fax: 954-764-4370



raritaneng.com